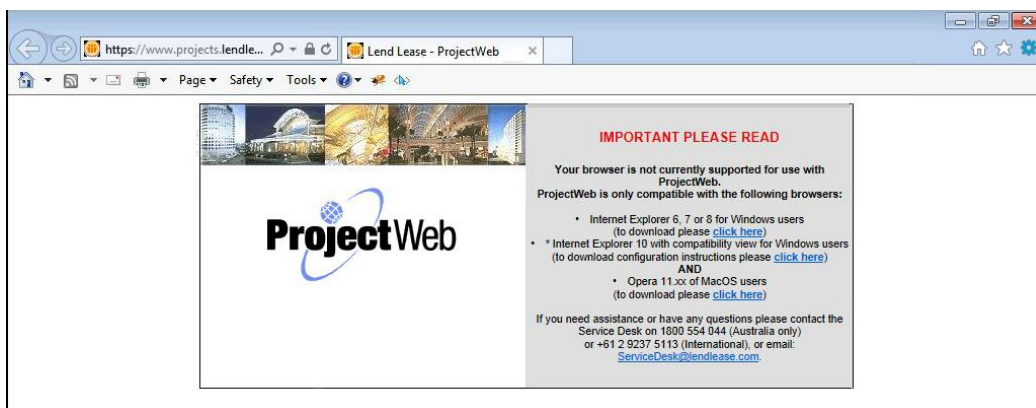


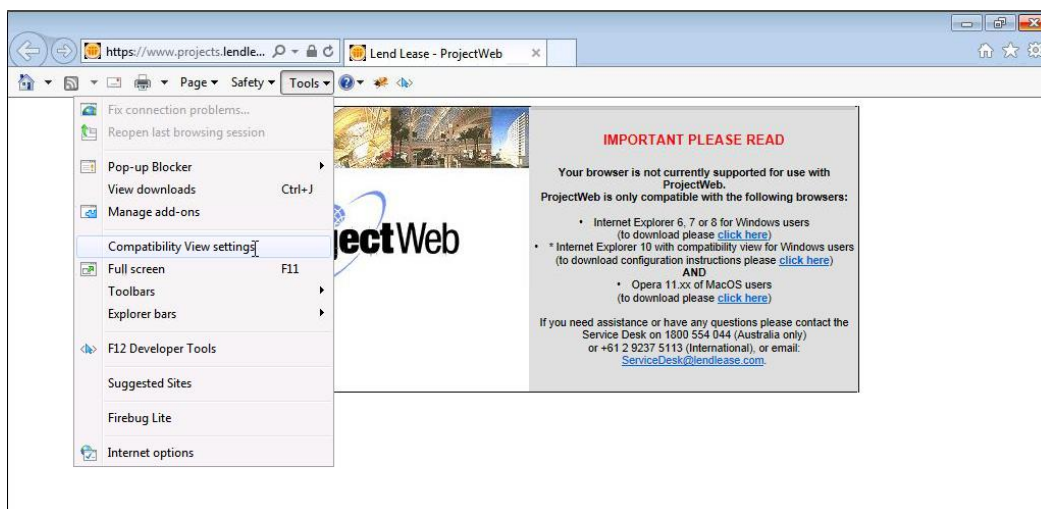
Internet Explorer 11

ProjectWeb detects the type of browser that visitors use and may display a message advising that a browser is not supported. Internet Explorer 11 (IE11) in its default configuration is likely to be affected. The following work around is offered for IE11 users:

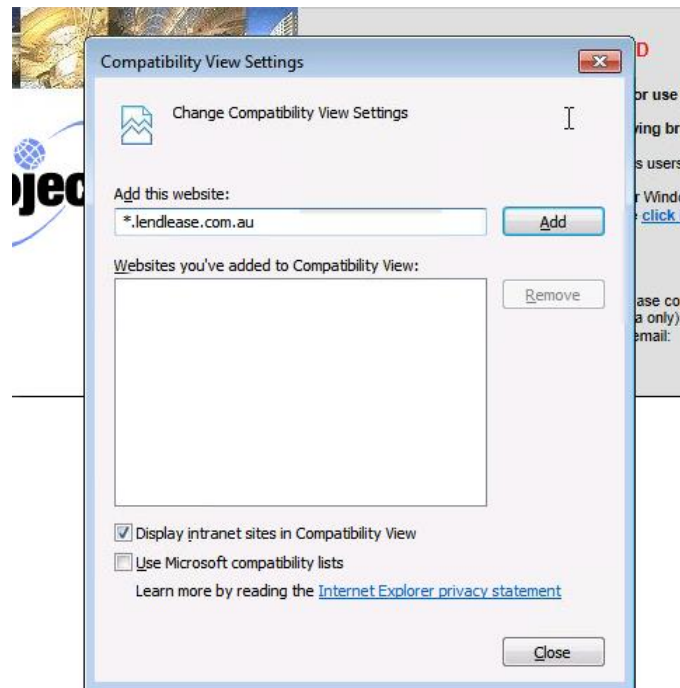
ProjectWeb should work successfully in IE11 as long as the site is added to ‘Compatibility View Settings’. To set this, please follow the steps in the screenshots below:



Click on ‘Tools’ > ‘Compatibility View Settings’ as shown in the screenshot below:



Then add '*.lendlease.com.au' into the text field and click 'Add'.



Close the 'Compatibility View Settings' window and refresh ProjectWeb, you should now be able to log in.

Further enquiries can be directed to ProjectWeb Support:

Phone Support:

1800 554 044 (Australia only)

or

+1 866 848 1200 (US only)

or

+61 2 9237 5113 (International)

Email Support:

service.desk@lendlease.com